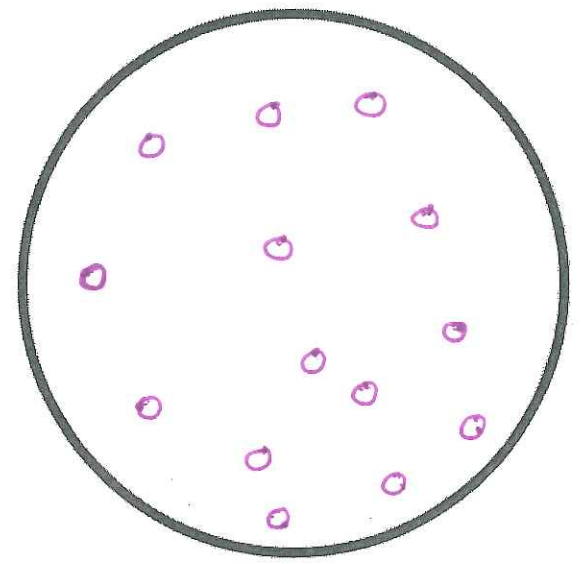
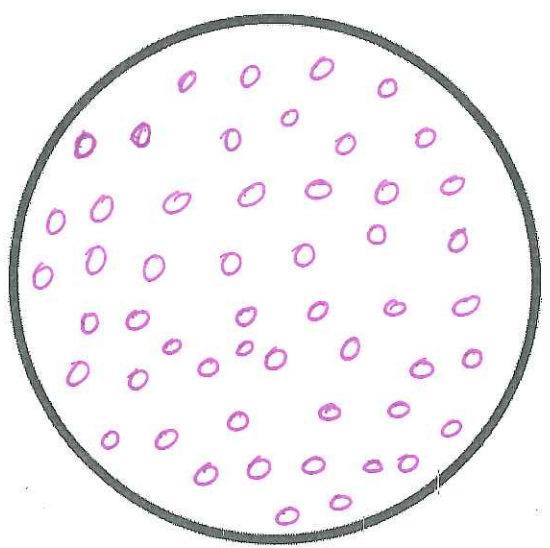
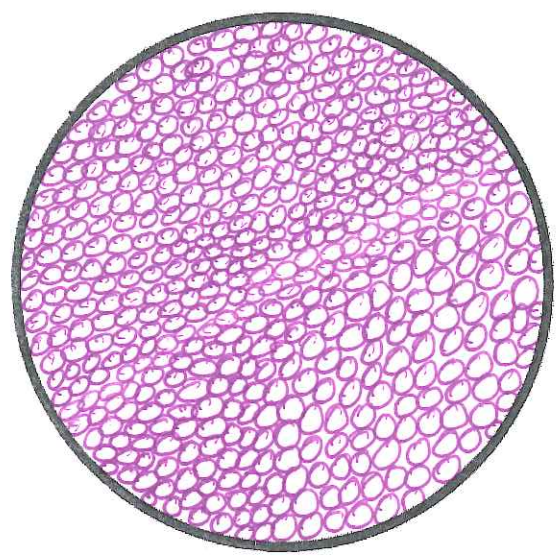

States that MATTER

Scientist: Key
Date: _____ - _____ - _____ HR: _____

Directions: draw enlarged atoms for a solid, liquid, and gas.



SOLID

(state of matter)

- * holds ^{or retains} shape
- * fixed volume
- * tightly packed

LIQUID

(state of matter)

- * Takes the shape of it's container
- * fixed volume
- * can be poured
- * Slide past each other easily

GAS

(state of matter)

- * Takes the shape of it's container (no shape of its own)
- * is the volume of its container
- * spreads out to fill its container