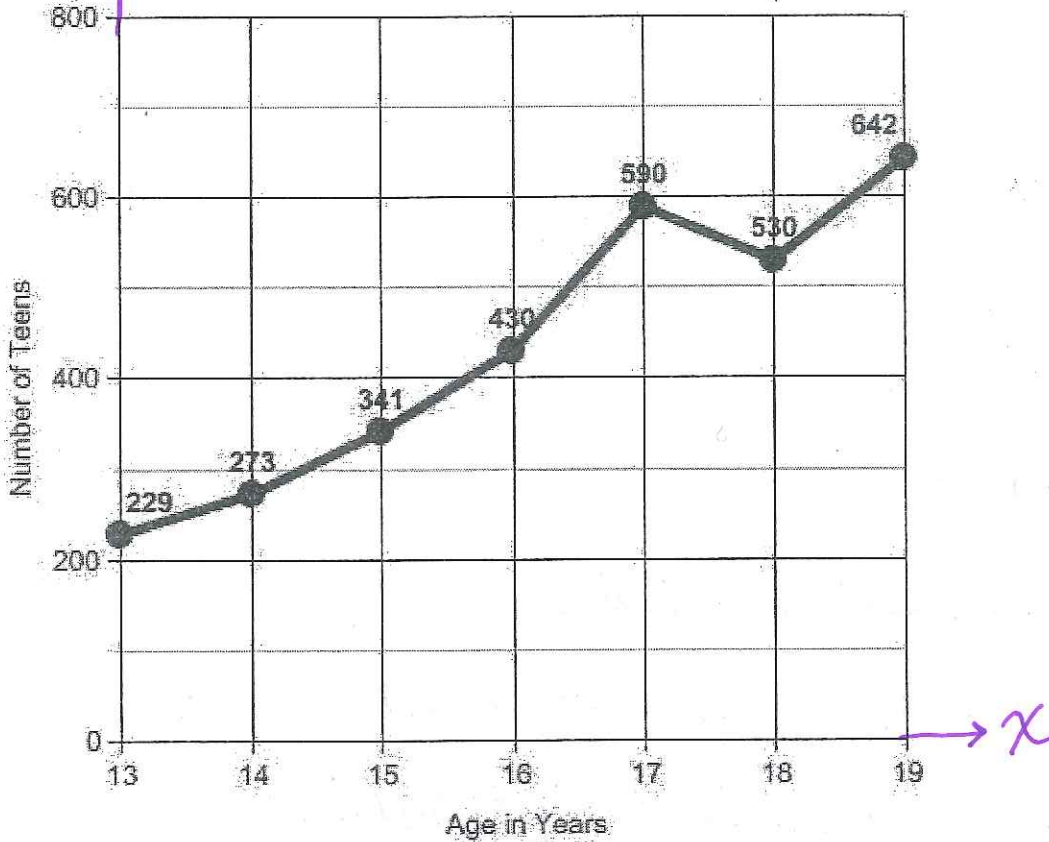


Graphing Practice

Part 1: Reading Graphs

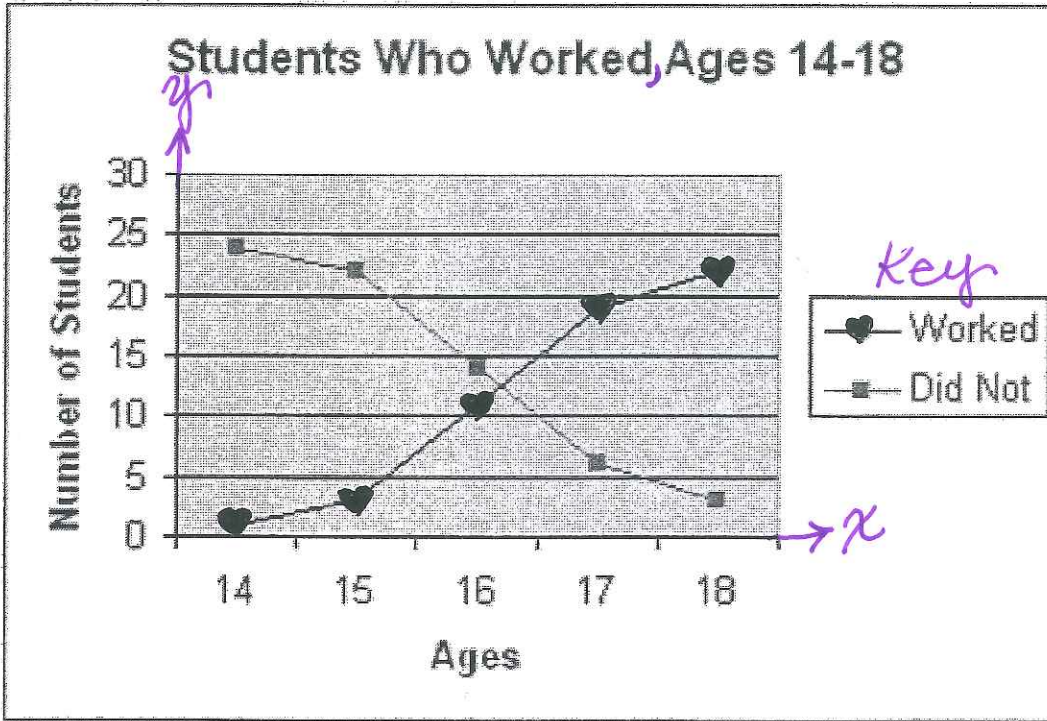
Reading a line graph

Smalltown Teens With Cell Phones



1. What is on the x axis? Age in years
2. What is on the y axis? Number of Teens
3. What is this table about? Smalltown Teens with cell phones
4. How many 16 year olds have cell phones? 430 16 year olds
5. Which age group has the lowest number of cell phones? 13 yr olds
6. Which age group has the highest? 19 yr olds

Reading a double line graph.



7. What is on the x axis? Ages

8. What is on the y axis? number of students

9. What is this graph about? Students who worked, Ages 14-18

10. What is a key? provides additional information

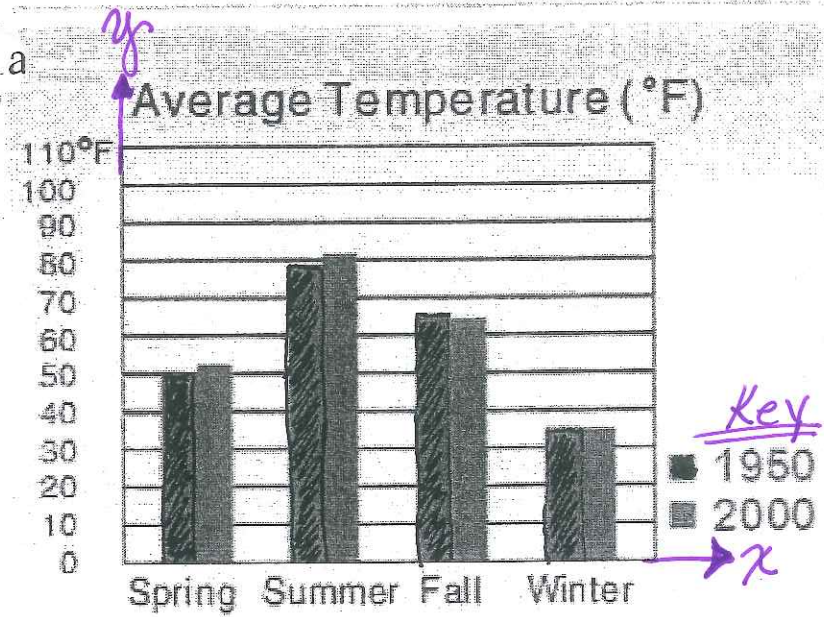
11. About how many 16 year old students do not work? 14 students

12. Which age group has the highest number of students who do not work? 14 yr olds

13. Which age group has the lowest number of students that do not work? 18 yr olds

14. About how many 15 year olds work? (23 students do not work)
3 or 4 students work

Reading a bar graph



15. What is this graph about? Average Temperature (°F) each season
16. What is on the x axis? Seasons
17. What is on the y axis? Temperature (°F)
18. Which year has the highest average temperature in the spring? 2000
19. Which year has the lowest average temperature in the fall? 2000