

BLACK CHERRY

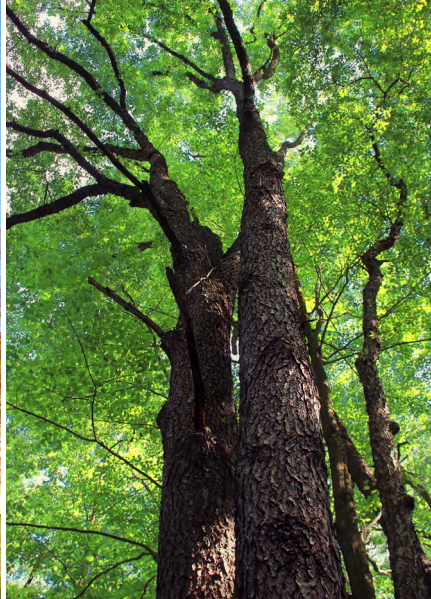
(*Prunus serotina*)



Rudolf Shaefer



Nicholas T



Key Features:



Peter Gorman

Flowers & Leaves

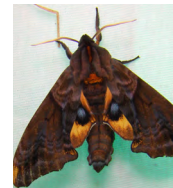
Flowers have a pleasant smell and support pollinators in early spring. Leaves grow dark and shiny, then turn gold in fall.



Mary Keim

Fruits

Sometimes used for jams or liqueurs, these fruits are highly prized by birds and other wildlife that devour them as they ripen.



Anita Gould

Visitors to Explore

Hosts caterpillars of this small-eyed sphinx moth, as well as a multitude of pollinators. A variety of birds, such as the orchard oriole, eat its berries.

Is black cherry right for you?



60-90 ft tall, 35-50 ft wide

To learn more about how you can help protect our wild places, visit [HabitatMatters.org](https://www.habitatmatters.org)