

BITTERNUT HICKORY

(*Carya cordiformis*)



AnRo0002



Is bitternut hickory right for you?



50-80 ft tall, 30-50 ft wide



Illinois Wildflowers

Nuts

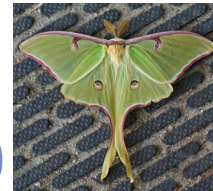
Large fruits have thin, tough, leathery shells and, as the name suggests, bitter meats. Wildlife value them as a food source, particularly in late winter.



Jim Conrad

Leaves

Leaves are compound, with an odd number of leaflets (usually 5-7). Bright green leaves fade to gold in fall.



Lynette Schimming

Visitors to Explore

Hickory trees host the caterpillars of many butterflies and moths, including this stunning luna moth. Many caterpillars are also food for songbirds.

To learn more about how you can help protect our wild places, visit HabitatMatters.org