

BIGTOOTH ASPEN

(*Populus grandidentata*)



A.A. Reznicek



Is bigtooth aspen right for you?



50-75 ft tall, 20-40 ft wide

Key Features:



Susan McDougal

Leaves

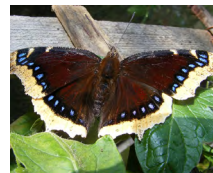
Green and shivering at the slightest breeze, leaves of this tree turn golden in fall. When clone patches turn, all connected trees turn color at the same time.



RWV Smith

Bark

Dusty white and greenish underneath, bigtooth aspen's thin bark toughens with age and contains chlorophyll; it's able to photosynthesize in winter with no leaves!



Stanislaw Szydlo

Visitors to Explore

In addition to the many animals that use this tree, like beaver and songbirds, many caterpillars, like those of this mourning cloak butterfly, rely on aspens for the fuel they need to grow.

To learn more about how you can help protect our wild places, visit HabitatMatters.org